

CATALOGUE NO. 8741.1

EMBARGOED UNTIL 11.30 A.M. 18 OCTOBER 1994

**DWELLING UNIT COMMENCEMENTS REPORTED BY APPROVING AUTHORITIES,  
NEW SOUTH WALES, JULY 1994**

NOTE: There was a break in series from November 1990. For more information, see paragraph 2 of the Explanatory Notes.

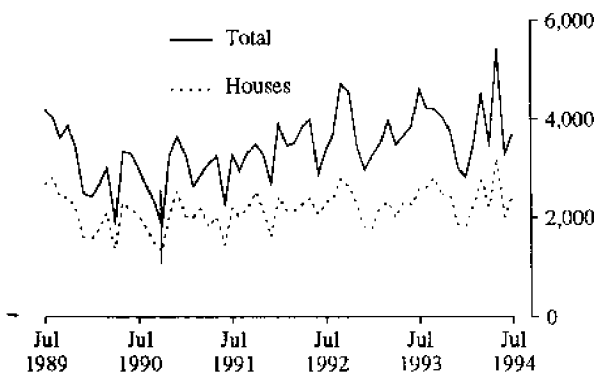
**MAIN FEATURES**

The total number of dwelling units commenced in New South Wales in July 1994 (3,700) was 13% higher than the previous month (3,281) and 20% lower than July 1993 (4,615).

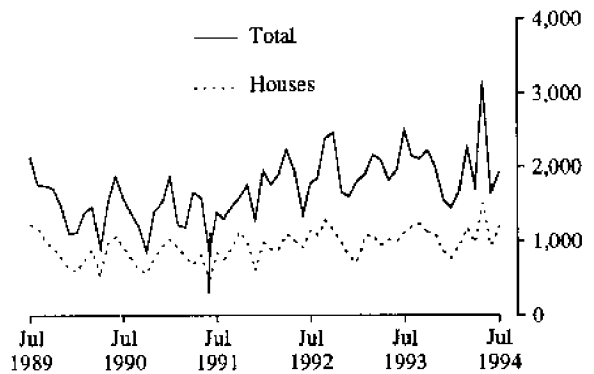
The number of houses commenced in New South Wales in July 1994 (2,442) was 20% higher than the previous month (2,035) while for the Sydney Statistical Division the increase was 28% (from 940 to 1,201).

The number of dwelling units in other residential buildings commenced in July 1994 (1,258) was slightly higher than the previous month (1,246).

**DWELLINGS COMMENCED IN NSW**



**DWELLINGS COMMENCED IN SYDNEY**



Indicates a break in series.

**INQUIRIES**

- for further information about statistics in this publication and the availability of related unpublished statistics, contact Ross Bailey on (02) 268 4176.
- for information about other ABS statistics and services please refer to the back of this publication.

## NOTES

The statistics on dwelling unit commencements are compiled from data supplied in monthly reports provided by local and other government authorities. The statistics relate to the number of new dwelling units reported as commencements of new houses and new other residential buildings.

Explanatory notes are provided at the back of this publication.

GREG BRAY  
Deputy Commonwealth Statistician

### Unpublished data

The ABS can make available certain dwelling commencements data which are not published, such as floor area, type of other residential building, material of roof and floor, sub-LGA level data and value ranges. Where it is not practicable to provide the required information by telephone, data can be provided in the following forms:

- Photocopy
- Microfiche
- Computer printout or floppy disk
- Computer generated maps displaying dwellings commenced data
- Clerically extracted tabulation

A charge may be made for providing unpublished information in these forms.

**For further details please telephone Ross Bailey on (02) 268 4176.**

**TABLE 1. DWELLING UNITS COMMENCED, NSW**  
(Number of dwelling units)

Period	Private sector			Public sector			Total		
	Houses	Other residential buildings	Total	Houses	Other residential buildings	Total	Houses	Other residential buildings	Total
1992-93	26,439	14,671	41,110	739	2,700	3,439	27,178	17,371	44,549
1993-94	28,427	15,861	44,288	763	1,832	2,595	29,190	17,693	46,883
1993—									
July	2,410	1,592	4,002	189	424	613	2,599	2,016	4,615
August	2,501	1,369	3,870	121	237	358	2,622	1,606	4,228
September	2,818	1,346	4,164	4	49	53	2,822	1,395	4,217
October	2,466	1,437	3,903	17	134	151	2,483	1,571	4,054
November	2,428	1,268	3,696	22	39	61	2,450	1,307	3,757
December	1,868	1,063	2,931	11	54	65	1,879	1,117	2,996
1994—									
January	1,815	937	2,752	31	56	87	1,846	993	2,839
February	2,183	1,139	3,322	64	107	171	2,247	1,246	3,493
March	2,652	1,430	4,082	120	287	407	2,772	1,717	4,489
April	2,148	1,081	3,229	71	192	263	2,219	1,273	3,492
May	3,141	2,060	5,201	75	146	221	3,216	2,206	5,422
June	1,997	1,139	3,136	38	107	145	2,035	1,246	3,281
July	2,379	1,070	3,449	63	188	251	2,442	1,258	3,700

**TABLE 2. DWELLING UNITS COMMENCED IN SELECTED STATISTICAL DIVISIONS**  
(Number of dwelling units)

Period	Private sector			Public sector			Total		
	Houses	Other residential buildings	Total	Houses	Other residential buildings	Total	Houses	Other residential buildings	Total
SYDNEY STATISTICAL DIVISION									
1992-93	11,919	9,464	21,383	382	1,758	2,140	12,301	11,222	23,523
1993-94	12,622	10,295	22,917	355	1,198	1,553	12,977	11,493	24,470
1993—									
July	1,035	1,120	2,155	95	254	349	1,130	1,374	2,504
August	1,110	816	1,926	84	142	226	1,194	958	2,152
September	1,245	828	2,073	—	41	41	1,245	869	2,114
October	1,120	984	2,104	3	115	118	1,123	1,099	2,222
November	1,094	850	1,944	2	39	41	1,096	889	1,985
December	864	638	1,502	1	54	55	865	692	1,557
1994—									
January	765	625	1,390	10	48	58	775	673	1,448
February	908	692	1,600	22	50	72	930	742	1,672
March	1,138	877	2,015	50	209	259	1,188	1,086	2,274
April	947	623	1,570	34	124	158	981	747	1,728
May	1,472	1,574	3,046	38	78	116	1,510	1,652	3,162
June	924	668	1,592	16	44	60	940	712	1,652
July	1,159	648	1,807	42	82	124	1,201	730	1,931

TABLE 2. DWELLING UNITS COMMENCED IN SELECTED STATISTICAL DIVISIONS—continued  
(Number of dwelling units)

Period	Private sector			Public sector			Total		
	Houses	Other residential buildings	Total	Houses	Other residential buildings	Total	Houses	Other residential buildings	Total
HUNTER STATISTICAL DIVISION									
1992-93	3,214	1,594	4,808	69	199	268	3,283	1,793	5,076
1993-94	3,812	1,889	5,701	116	109	225	3,928	1,998	5,926
1993—									
July	415	180	595	14	24	38	429	204	633
August	360	138	498	8	25	33	368	163	531
September	387	163	550	4	6	10	391	169	560
October	367	191	558	3	17	20	370	208	578
November	275	113	388	—	—	—	275	113	388
December	228	105	333	—	—	—	228	105	333
1994—									
January	241	137	378	14	—	14	255	137	392
February	324	169	493	25	8	33	349	177	526
March	359	214	573	27	14	41	386	228	614
April	244	99	343	9	—	9	253	99	352
May	350	161	511	10	10	20	360	171	531
June	262	219	481	2	5	7	264	224	488
July	262	124	386	1	62	63	263	186	449
ILLAWARRA STATISTICAL DIVISION									
1992-93	2,310	939	3,249	26	246	272	2,336	1,185	3,521
1993-94	2,319	801	3,120	65	135	200	2,384	936	3,320
1993—									
July	211	62	273	28	27	55	239	89	328
August	207	98	305	1	23	24	208	121	329
September	329	66	395	—	—	—	329	66	395
October	223	92	315	—	—	—	223	92	315
November	218	90	308	1	—	1	219	90	309
December	145	113	258	—	—	—	145	113	258
1994—									
January	77	10	87	—	8	8	77	18	95
February	231	63	294	—	—	—	231	63	294
March	127	38	165	23	37	60	150	75	225
April	147	72	219	8	—	8	155	72	227
May	264	64	328	3	—	3	267	64	331
June	140	33	173	1	40	41	141	73	214
July	237	94	331	2	—	2	239	94	333
BALANCE OF NEW SOUTH WALES									
1992-93	8,996	2,674	11,670	262	497	759	9,258	3,171	12,429
1993-94	9,674	2,876	12,550	227	390	617	9,901	3,266	13,167
1993—									
July	749	230	979	52	119	171	801	349	1,150
August	824	317	1,141	28	47	75	852	364	1,216
September	857	289	1,146	—	2	2	857	291	1,148
October	756	170	926	11	2	13	767	172	939
November	841	215	1,056	19	—	19	860	215	1,075
December	631	207	838	10	—	10	641	207	848
1994—									
January	732	165	897	7	—	7	739	165	904
February	720	215	935	17	49	66	737	264	1,001
March	1,028	301	1,329	20	27	47	1,048	328	1,376
April	810	287	1,097	20	68	88	830	355	1,185
May	1,055	261	1,316	24	58	82	1,079	319	1,398
June	671	219	890	19	18	37	690	237	927
July	721	204	925	18	44	62	739	248	987

TABLE 3. HOUSES COMMENCED, BY MATERIAL OF OUTER WALLS, NSW

Period	Double brick (a)	Brick veneer	Fibre cement	Timber	Other and not stated	Total
PRIVATE SECTOR						
1992-93	3,203	19,857	1,133	1,763	483	26,439
1993-94	3,797	21,003	1,067	1,857	703	28,427
1993—						
July	313	1,698	91	192	116	2,410
August	365	1,723	97	192	124	2,501
September	347	2,114	115	168	74	2,818
October	327	1,796	96	186	61	2,466
November	303	1,817	101	148	59	2,428
December	279	1,335	78	132	44	1,868
1994—						
January	265	1,298	73	141	38	1,815
February	253	1,656	91	146	37	2,183
March	395	1,984	86	145	42	2,652
April	262	1,654	76	118	38	2,148
May	430	2,391	97	174	49	3,141
June	258	1,537	66	115	21	1,997
July	287	1,852	85	131	24	2,379
PUBLIC SECTOR						
1992-93	67	658	9	2	3	739
1993-94	87	648	1	5	22	763
1993—						
July	29	137	1	2	20	189
August	21	98	—	—	2	121
September	—	4	—	—	—	4
October	1	16	—	—	—	17
November	7	15	—	—	—	22
December	4	7	—	—	—	11
1994—						
January	5	26	—	—	—	31
February	5	59	—	—	—	64
March	7	113	—	—	—	120
April	2	69	—	—	—	71
May	2	73	—	—	—	75
June	4	31	—	3	—	38
July	2	59	—	2	—	63
TOTAL						
1992-93	3,270	20,515	1,142	1,765	486	27,178
1993-94	3,884	21,651	1,068	1,862	725	29,190
1993—						
July	342	1,835	92	194	136	2,599
August	386	1,821	97	192	126	2,622
September	347	2,118	115	168	74	2,822
October	328	1,812	96	186	61	2,483
November	310	1,832	101	148	59	2,450
December	283	1,342	78	132	44	1,879
1994—						
January	270	1,324	73	141	38	1,846
February	258	1,715	91	146	37	2,247
March	402	2,097	86	145	42	2,772
April	264	1,723	76	118	38	2,219
May	432	2,464	97	174	49	3,216
June	262	1,568	66	118	21	2,035
July	289	1,911	85	133	24	2,442

(a) Includes house constructed with outer walls of stone or concrete.

TABLE 4. HOUSES COMMENCED IN STATISTICAL DIVISIONS

Statistical division	June 1994						July 1994					
	Double brick (a)	Brick veneer	Fibre cement	Timber	Other and not stated	Total	Double brick (a)	Brick veneer	Fibre cement	Timber	Other and not stated	Total
<b>PRIVATE SECTOR</b>												
Sydney	92	790	8	28	6	924	121	981	14	34	9	1,159
Hunter	37	201	10	14	—	262	20	214	9	19	—	262
Illawarra	3	120	6	9	2	140	10	207	6	11	3	237
Richmond-Tweed	12	92	1	16	3	124	13	122	4	24	3	166
Mid-North Coast	30	169	8	13	6	226	25	101	4	9	2	141
Northern	9	29	4	5	—	47	13	42	9	6	—	70
North Western	4	12	4	1	—	21	5	9	4	1	—	19
Central West	34	10	5	1	—	50	29	20	2	3	1	55
South Eastern	29	85	14	20	4	152	33	102	27	17	6	185
Murrumbidgee	5	13	4	3	—	25	9	24	5	4	—	42
Murray	3	16	1	4	—	24	9	30	1	3	—	43
Far West	—	—	1	1	—	2	—	—	—	—	—	—
<b>New South Wales</b>	<b>258</b>	<b>1,537</b>	<b>66</b>	<b>115</b>	<b>21</b>	<b>1,997</b>	<b>287</b>	<b>1,852</b>	<b>85</b>	<b>131</b>	<b>24</b>	<b>2,379</b>
<b>PUBLIC SECTOR</b>												
Sydney	—	16	—	—	—	16	—	42	—	—	—	42
Hunter	—	—	—	2	—	2	—	1	—	—	—	1
Illawarra	1	—	—	—	—	1	—	1	—	1	—	2
Richmond-Tweed	—	—	—	—	—	—	—	—	—	—	—	—
Mid-North Coast	—	9	—	—	—	9	—	3	—	—	—	3
Northern	—	—	—	1	—	1	—	3	—	1	—	4
North Western	2	—	—	—	—	2	—	—	—	—	—	—
Central West	1	—	—	—	—	1	1	5	—	—	—	6
South Eastern	—	—	—	—	—	—	—	4	—	—	—	4
Murrumbidgee	—	2	—	—	—	2	—	—	—	—	—	—
Murray	—	4	—	—	—	4	—	—	—	—	—	—
Far West	—	—	—	—	—	—	1	—	—	—	—	1
<b>New South Wales</b>	<b>4</b>	<b>31</b>	<b>—</b>	<b>3</b>	<b>—</b>	<b>38</b>	<b>2</b>	<b>59</b>	<b>—</b>	<b>2</b>	<b>—</b>	<b>63</b>
<b>TOTAL</b>												
Sydney	92	806	8	28	6	940	121	1,023	14	34	9	1,201
Hunter	37	201	10	16	—	264	20	215	9	19	—	263
Illawarra	4	120	6	9	2	141	10	208	6	12	3	239
Richmond-Tweed	12	92	1	16	3	124	13	122	4	24	3	166
Mid-North Coast	30	178	8	13	6	235	25	104	4	9	2	144
Northern	9	29	4	6	—	48	13	45	9	7	—	74
North Western	6	12	4	1	—	23	5	9	4	1	—	19
Central West	35	10	5	1	—	51	30	25	2	3	1	61
South Eastern	29	85	14	20	4	152	33	106	27	17	6	189
Murrumbidgee	5	15	4	3	—	27	9	24	5	4	—	42
Murray	3	20	1	4	—	28	9	30	1	3	—	43
Far West	—	—	1	1	—	2	1	—	—	—	—	1
<b>New South Wales</b>	<b>262</b>	<b>1,568</b>	<b>66</b>	<b>118</b>	<b>21</b>	<b>2,035</b>	<b>289</b>	<b>1,911</b>	<b>85</b>	<b>133</b>	<b>24</b>	<b>2,442</b>

(a) Includes houses constructed with outer walls of stone or concrete.

**TABLE 5. NEW DWELLING UNITS COMMENCED IN OTHER RESIDENTIAL BUILDINGS, BY TYPE IN STATISTICAL DIVISIONS  
JULY 1994**

Statistical division	Semi-detached, row or terrace houses, townhouses, etc. of			Flats, units or apartments in a building of			Unknown or not stated	Total	
	1 storey	2 or more storeys	Total	1-2 storeys	3 storeys	4 or more storeys			Total
NUMBER									
Sydney	260	191	451	133	51	95	279	—	730
Hunter	97	17	114	65	—	7	72	—	186
Illawarra	51	8	59	35	—	—	35	—	94
Richmond-Tweed	42	7	49	65	—	—	65	—	114
Mid-North Coast	18	10	28	32	—	—	32	—	60
Northern	8	—	8	3	—	—	3	—	11
North Western	—	—	—	2	—	—	2	—	2
Central West	6	—	6	—	—	—	—	—	6
South Eastern	10	—	10	18	12	—	30	—	40
Murrumbidgee	2	—	2	4	—	—	4	—	6
Murray	—	—	—	9	—	—	9	—	9
Far West	—	—	—	—	—	—	—	—	—
<b>New South Wales</b>	<b>494</b>	<b>233</b>	<b>727</b>	<b>366</b>	<b>63</b>	<b>102</b>	<b>531</b>	<b>—</b>	<b>1,258</b>
VALUE (\$'000)									
Sydney	18,160	18,155	36,315	10,019	5,145	9,815	24,979	—	61,295
Hunter	7,007	1,435	8,442	3,945	—	800	4,745	—	13,186
Illawarra	3,050	583	3,633	3,405	—	—	3,405	—	7,038
Richmond-Tweed	3,184	680	3,864	4,215	—	—	4,215	—	8,079
Mid-North Coast	1,092	1,012	2,103	1,825	—	—	1,825	—	3,928
Northern	549	—	549	250	—	—	250	—	799
North Western	—	—	—	134	—	—	134	—	134
Central West	360	—	360	—	—	—	—	—	360
South Eastern	896	—	896	1,206	1,200	—	2,406	—	3,302
Murrumbidgee	120	—	120	200	—	—	200	—	320
Murray	—	—	—	370	—	—	370	—	370
Far West	—	—	—	—	—	—	—	—	—
<b>New South Wales</b>	<b>34,416</b>	<b>21,865</b>	<b>56,281</b>	<b>25,569</b>	<b>6,345</b>	<b>10,615</b>	<b>42,529</b>	<b>—</b>	<b>98,810</b>

**NEW OTHER RESIDENTIAL DWELLING UNITS COMMENCED, NSW**

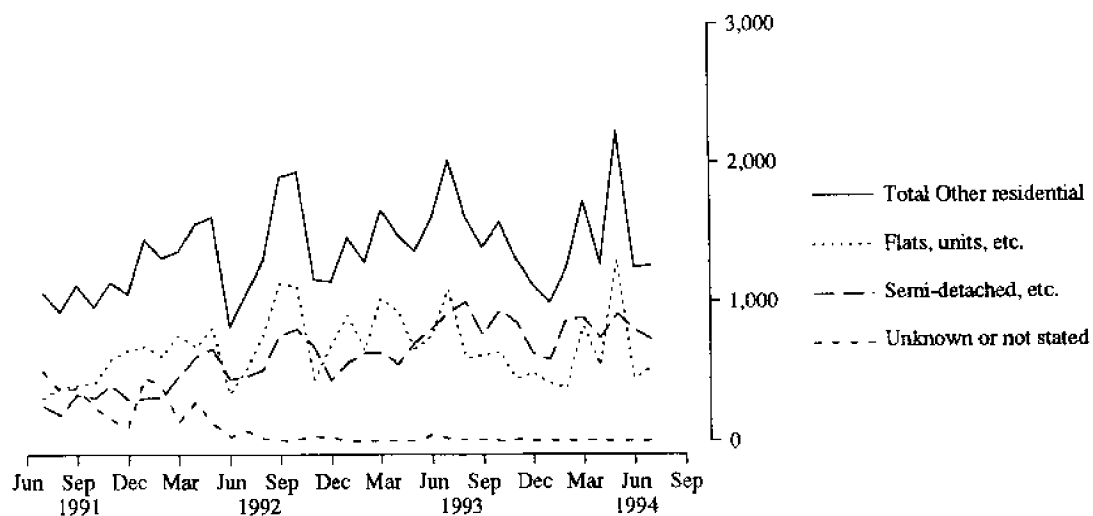


TABLE 6. DWELLING UNITS COMMENCED BY TYPE OF RESIDENTIAL BUILDING IN STATISTICAL LOCAL AREAS  
(Number of dwelling units)

Statistical area	Houses												Other residential buildings												Total
	1994												1994												
	Feb.	Mar.	Apr.	May	Jun.	Jul.	Feb.	Mar.	Apr.	May	Jun.	Jul.	Feb.	Mar.	Apr.	May	Jun.	Jul.							
SYDNEY STATISTICAL DIVISION																									
Botany (A)	—	4	—	—	3	2	—	63	—	—	—	—	—	67	—	—	—	—							
Leichhardt (A)	1	6	2	5	3	4	2	23	—	—	—	—	—	3	29	2	27	3							
Marrickville (A)	—	2	1	6	—	—	6	2	—	—	—	—	—	4	4	1	125	5							
South Sydney (C)	1	—	—	7	—	—	—	8	—	—	—	—	—	8	—	—	256	8							
Sydney (C) — Inner and Remainder	—	—	—	—	—	—	—	—	—	—	—	—	—	—	—	—	—	—							
Inner Sydney SSD	2	12	3	18	6	6	8	96	—	—	—	—	—	—	108	3	408	16							
Randwick (A)	3	6	3	9	8	15	29	19	12	95	69	9	32	25	15	104	77	24							
Waverley (A)	1	2	2	2	—	1	2	—	10	2	8	—	3	2	12	4	8	1							
Woolahra (A)	—	3	3	2	1	1	—	—	—	—	—	10	—	3	3	2	1	11							
Eastern Suburbs SSD	4	11	8	13	9	17	31	19	22	97	77	19	35	30	30	110	86	36							
Hurstville (C)	16	17	9	5	9	8	32	143	12	4	4	52	48	160	21	9	13	60							
Kogarah (A)	1	—	—	4	2	5	—	16	—	3	18	—	1	16	—	7	20	5							
Rockdale (A)	3	10	8	10	7	14	2	8	21	8	18	2	5	18	29	18	25	16							
Sutherland Shire (A)	77	45	25	54	36	52	201	86	8	192	93	18	278	131	33	246	129	70							
St George-Sutherland SSD	97	72	42	73	54	79	235	253	41	207	133	72	332	325	83	280	187	151							
Bankstown (C)	21	41	21	34	19	21	26	68	12	78	28	26	47	109	33	112	47	47							
Canterbury (A)	4	8	7	6	6	9	—	15	56	15	11	14	4	23	63	21	17	23							
Canterbury-Bankstown SSD	25	49	28	40	25	30	26	83	68	93	39	40	51	132	96	133	64	70							
Fairfield (C)	11	—	80	22	23	24	—	33	70	9	53	8	11	33	150	31	76	32							
Liverpool (C)	118	114	55	253	125	275	43	36	48	70	31	91	161	150	103	323	156	366							
Fairfield-Liverpool SSD	129	114	135	275	148	299	43	69	118	79	84	99	172	183	253	354	232	398							
Camden (A)	43	28	51	43	73	53	—	6	2	8	—	—	43	34	53	51	73	53							
Campbelltown (C)	58	35	44	57	82	66	18	4	28	12	16	5	76	39	72	69	98	71							
Wollondilly (A)	31	64	15	33	20	22	4	7	—	2	15	—	35	71	15	35	35	22							
Outer South	—	—	—	—	—	—	—	—	—	—	—	—	—	—	—	—	—	—							
Western Sydney SSD	132	127	110	133	175	141	22	17	30	22	31	5	154	144	140	155	206	146							
Ashfield (A)	—	1	—	1	—	—	—	—	54	2	—	—	—	1	54	3	—	—							
Burwood (A)	4	5	3	1	2	1	15	—	4	2	—	4	19	5	7	3	2	5							
Concord (A)	3	4	2	6	1	1	2	—	—	17	16	—	5	4	2	23	17	1							
Drumoyne (A)	1	5	2	3	—	—	11	18	17	—	—	47	12	23	19	3	—	48							
Strathfield (A)	1	2	1	—	—	6	—	14	—	—	10	—	1	16	1	—	10	6							
Inner Western Sydney SSD	9	17	8	11	3	9	28	32	75	21	26	51	37	49	83	32	29	60							



TABLE 6. DWELLING UNITS COMMENCED BY TYPE OF RESIDENTIAL BUILDING IN STATISTICAL LOCAL AREAS—continued  
(Number of dwelling units)

Statistical area	Houses												Other residential buildings												Total
	1994												1994												
	Feb.	Mar.	Apr.	May	Jun.	Jul.	Feb.	Mar.	Apr.	May	Jun.	Jul.	Feb.	Mar.	Apr.	May	Jun.	Jul.	Feb.	Mar.	Apr.	May	Jun.	Jul.	
SYDNEY STATISTICAL DIVISION—continued																									
Auburn (A)	1	3	1	5	1	3	—	—	—	—	77	3	2	1	3	1	82	4	5						
Holroyd (A)	—	8	5	18	6	11	—	—	—	—	126	14	28	—	20	5	144	20	39						
Parramatta (C)	25	20	14	35	10	12	70	16	93	38	119	38	28	95	36	107	154	48	40						
Central Western Sydney SSD	26	31	20	58	17	26	70	28	93	55	322	55	58	96	59	113	380	72	84						
Blue Mountains (C)	25	34	32	55	33	31	2	2	4	—	—	2	2	27	36	36	55	35	33						
Hawkesbury (C)	10	—	129	31	35	33	20	—	38	2	4	5	5	30	—	167	33	39	38						
Perrith (C)	55	105	58	137	27	83	24	43	23	20	25	20	32	79	148	81	162	47	115						
Outer Western Sydney SSD	90	139	219	223	95	147	46	45	65	27	26	39	39	136	184	284	250	121	186						
Baulkham Hills (A)	48	88	45	68	41	47	24	91	70	33	33	61	8	72	179	115	101	102	55						
Blacktown (C)	146	193	156	220	94	92	63	59	38	46	46	10	22	209	252	194	266	104	114						
Blacktown— Baulkham Hills SSD	194	281	201	288	135	139	87	150	108	79	71	30	30	281	431	309	367	206	169						
Hunter's Hill (A)	8	3	2	—	—	2	—	4	2	—	—	—	2	8	7	4	—	—	4						
Lane Cove (A)	5	8	6	4	—	1	—	12	2	5	—	—	—	5	20	8	9	—	1						
Mosman (A)	1	5	2	3	—	3	—	15	2	—	—	—	2	1	20	4	53	—	5						
North Sydney (A)	4	1	—	7	2	2	6	88	—	48	31	6	6	10	89	—	55	33	8						
Ryde (C)	2	50	10	21	16	11	—	18	11	36	28	10	2	68	21	57	44	21	21						
Willoughby (C)	7	16	5	11	3	11	27	2	—	34	3	8	8	34	18	5	45	6	19						
Lower Northern Sydney SSD	27	83	25	46	21	30	33	139	17	173	62	28	28	60	222	42	219	83	58						
Hornsby (A)	43	76	48	92	40	31	45	38	18	42	22	4	4	88	114	66	134	62	35						
Ku-ring-gai (A)	13	16	7	24	9	17	22	—	—	23	25	47	47	35	16	7	47	34	64						
Hornsby-Ku-ring-gai SSD	56	92	55	116	49	48	67	38	18	65	47	51	51	123	130	73	181	96	99						
Manly (A)	—	3	—	1	4	1	—	—	26	2	—	—	6	—	3	26	3	4	7						
Pittwater (A)	7	1	1	22	14	17	—	—	—	10	15	29	7	7	1	1	32	29	46						
Warringah (A)	10	22	23	24	13	16	16	50	12	8	14	10	10	26	72	35	32	27	26						
Northern Beaches SSD	17	26	24	47	31	34	16	50	38	20	29	45	45	33	76	62	67	60	79						
Gosford (C)	44	40	33	35	41	111	8	22	28	20	8	99	8	52	62	61	55	49	210						
Wyong (A)	78	94	70	134	131	85	22	45	26	37	14	37	37	100	139	96	171	145	122						
Gosford-Wyong SSD	122	134	103	169	172	196	30	67	54	57	22	136	136	152	201	157	226	194	332						
<b>SYDNEY SD</b>	<b>930</b>	<b>1,188</b>	<b>981</b>	<b>1,510</b>	<b>940</b>	<b>1,201</b>	<b>742</b>	<b>1,086</b>	<b>747</b>	<b>1,652</b>	<b>712</b>	<b>730</b>	<b>1,672</b>	<b>2,274</b>	<b>1,728</b>	<b>3,162</b>	<b>1,652</b>	<b>1,931</b>							

TABLE 6. DWELLING UNITS COMMENCED BY TYPE OF RESIDENTIAL BUILDING IN STATISTICAL LOCAL AREAS—continued  
(Number of dwelling units)

Statistical area	Houses												Other residential buildings												Total
	1994												1994												
	Feb.	Mar.	Apr.	May	Jun.	Jul.	Feb.	Mar.	Apr.	May	Jun.	Jul.	Feb.	Mar.	Apr.	May	Jun.	Jul.							
HUNTER STATISTICAL DIVISION																									
Cessnock (C)	12	5	—	4	—	12	—	2	—	—	—	—	—	—	—	—	—	—	—						
Lake Macquarie (C)	131	117	57	126	78	98	57	62	18	18	76	188	179	7	2	75	177	126	174						
Maitland (C)	22	35	18	61	34	28	—	19	7	50	4	22	54	—	—	25	79	84	32						
Newcastle (C) — Inner and Remainder	67	69	45	51	35	31	63	85	32	66	86	130	154	77	117	77	117	121	72						
Port Stephens (A)	63	109	62	41	48	44	27	60	10	18	36	90	169	72	59	72	59	84	78						
Newcastle SSD	295	335	182	283	195	213	147	228	69	153	220	442	563	251	436	251	436	415	368						
Dungog (A)	4	4	5	5	12	5	—	—	—	2	—	4	4	5	7	5	7	12	5						
Gloucester (A)	4	3	2	2	2	3	—	—	—	—	—	4	3	2	2	4	2	2	3						
Great Lakes (A)	15	21	33	26	29	23	18	—	25	10	4	33	21	58	36	58	36	33	46						
Merriwa (A)	2	1	2	2	1	1	—	—	—	—	—	2	1	2	2	2	2	1	1						
Murrumbidgee (A)	2	—	—	—	—	1	2	—	—	—	—	4	—	—	—	—	—	—	1						
Muswellbrook (A)	3	5	4	17	6	5	—	—	—	—	—	3	5	4	17	4	17	6	7						
Scone (A)	8	8	1	7	10	4	4	—	—	—	—	12	8	1	7	12	7	10	4						
Singleton (A)	16	9	24	18	9	8	6	—	5	6	—	22	9	29	24	29	24	9	14						
Hunter SD Balance SSD	54	51	71	77	69	50	30	—	30	18	4	84	51	101	95	101	95	73	81						
<b>HUNTER SD</b>	<b>349</b>	<b>386</b>	<b>253</b>	<b>360</b>	<b>264</b>	<b>263</b>	<b>177</b>	<b>228</b>	<b>99</b>	<b>171</b>	<b>224</b>	<b>526</b>	<b>614</b>	<b>352</b>	<b>531</b>	<b>352</b>	<b>488</b>	<b>449</b>	<b>449</b>						
ILLAWARRA STATISTICAL DIVISION																									
Kiama (A)	9	16	9	11	14	13	—	4	2	4	2	9	20	11	15	11	15	16	17						
Shellharbour (A)	24	32	17	43	27	50	7	15	15	6	5	31	47	32	49	32	49	32	60						
Wollongong (C)	51	44	58	47	43	49	31	48	48	40	64	82	92	106	87	106	87	107	102						
Wollongong SSD	84	92	84	101	84	112	38	67	65	50	71	122	159	149	151	149	151	155	179						
Shoalhaven (C)	121	7	56	101	28	82	25	8	5	8	2	146	15	61	109	61	109	30	109						
Wingecarribee (A)	26	51	15	65	29	45	—	—	2	6	—	26	51	17	71	17	71	29	45						
Illawarra SD Balance SSD	147	58	71	166	57	127	25	8	7	14	2	172	66	78	180	78	180	59	154						
<b>ILLAWARRA SD</b>	<b>231</b>	<b>150</b>	<b>155</b>	<b>267</b>	<b>141</b>	<b>239</b>	<b>63</b>	<b>75</b>	<b>72</b>	<b>64</b>	<b>73</b>	<b>294</b>	<b>225</b>	<b>227</b>	<b>331</b>	<b>227</b>	<b>214</b>	<b>214</b>	<b>333</b>						

TABLE 6. DWELLING UNITS COMMENCED BY TYPE OF RESIDENTIAL BUILDING IN STATISTICAL LOCAL AREAS—continued  
(Number of dwelling units)

Statistical area	Other residential buildings												Total				
	Houses						Total										
	Feb.	Mar.	Apr.	May	Jun.	Jul.	Feb.	Mar.	Apr.	May	Jun.	Jul.					
1994																	
RICHMOND-TWEED STATISTICAL DIVISION																	
Tweed (A) Pt A	51	20	59	45	41	46	31	6	64	27	49	40	82	26	123	90	86
Tweed Heads SSD	51	20	59	45	41	46	31	6	64	27	49	40	82	26	123	90	86
Ballina (A)	21	47	36	32	37	46	26	58	32	16	15	23	47	105	68	48	69
Byron (A)	41	37	42	34	16	42	14	6	—	9	20	21	55	43	42	43	63
Casino (A)	8	3	2	5	3	2	2	4	—	—	2	2	10	7	2	5	4
Kyogle (A)	4	25	4	8	2	5	—	—	—	6	4	—	4	25	4	14	5
Lismore (C)	17	21	22	25	—	—	13	7	7	6	—	12	30	28	29	31	—
Richmond River (A)	5	10	5	9	7	2	2	2	—	—	—	8	7	12	5	9	7
Tweed (A) Pt B	21	14	49	10	18	23	8	4	32	4	8	8	29	18	81	14	31
Richmond-Tweed SD Balance SSD	117	157	160	123	83	120	65	81	71	41	49	74	182	238	231	164	194
<b>RICHMOND-TWEED SD</b>	<b>168</b>	<b>177</b>	<b>219</b>	<b>168</b>	<b>124</b>	<b>166</b>	<b>96</b>	<b>87</b>	<b>135</b>	<b>68</b>	<b>98</b>	<b>114</b>	<b>264</b>	<b>264</b>	<b>354</b>	<b>236</b>	<b>280</b>
MID-NORTH COAST STATISTICAL DIVISION																	
Bellingen (A)	13	20	10	18	16	6	—	—	—	—	—	—	13	20	10	18	6
Coffs Harbour (C)	46	42	68	92	55	52	8	19	31	30	9	18	54	61	99	122	70
Copmanhurst (A)	2	1	2	3	4	3	—	—	—	—	2	—	2	1	2	3	3
Grafton (C)	2	4	1	4	4	2	2	10	8	6	2	6	4	14	9	10	8
Maclean (A)	5	11	—	66	14	10	15	6	—	31	8	2	20	17	—	97	22
Nambucca (A)	5	14	7	14	16	15	2	2	—	2	—	4	7	16	7	16	19
Nymboida (A)	1	2	7	6	4	5	—	—	—	—	—	—	1	2	7	6	5
Ullmarra (A)	3	3	8	6	5	1	—	—	—	—	—	—	3	3	8	6	1
Clarence SSD	77	97	103	209	118	94	27	37	39	69	21	30	104	134	142	278	124
Greater Taree (C)	7	2	25	27	25	31	2	—	17	4	13	4	9	2	42	31	35
Hastings (A)	61	130	98	115	77	2	49	82	49	17	8	26	110	212	147	132	28
Kempsey (A)	14	16	9	24	15	17	—	—	5	—	—	—	14	16	14	24	15
Hastings SSD	82	148	132	166	117	50	51	82	71	21	21	30	133	230	203	187	80
<b>MID-NORTH COAST SD</b>	<b>159</b>	<b>245</b>	<b>235</b>	<b>375</b>	<b>235</b>	<b>144</b>	<b>78</b>	<b>119</b>	<b>110</b>	<b>90</b>	<b>42</b>	<b>60</b>	<b>237</b>	<b>364</b>	<b>345</b>	<b>465</b>	<b>277</b>

TABLE 6. DWELLING UNITS COMMENCED BY TYPE OF RESIDENTIAL BUILDING IN STATISTICAL LOCAL AREAS—continued  
(Number of dwelling units)

Statistical area	Houses												Total						
	Other residential buildings																		
	1994																		
	Feb.	Mar.	Apr.	May	Jun.	Jul.	Feb.	Mar.	Apr.	May	Jun.	Jul.	Feb.	Mar.	Apr.	May	Jun.	Jul.	
NORTHERN STATISTICAL DIVISION																			
Barraba (A)	1	4	—	—	—	—	—	—	—	—	—	—	—	—	—	—	—	—	—
Bingara (A)	2	2	1	1	—	3	—	2	—	—	—	—	1	4	2	—	—	—	3
Gunnedah (A)	3	1	1	8	1	7	—	—	—	—	—	—	3	1	1	8	1	7	1
Inverell (A) Pt A	4	1	2	2	1	4	—	—	—	—	—	—	4	1	2	2	1	4	4
Manilla (A)	3	5	1	2	—	3	—	—	—	—	—	—	3	5	1	2	—	—	13
Nundle (A)	—	—	1	2	1	2	—	—	—	—	—	—	—	—	1	2	1	2	12
Parry (A)	9	8	9	14	10	3	—	—	—	—	—	—	9	8	9	14	10	3	3
Quirindi (A)	3	3	1	4	2	1	—	—	—	3	—	—	3	3	1	4	5	1	1
Tamworth (C)	9	13	14	10	16	24	5	—	2	3	6	—	14	13	16	13	16	30	30
Yallaroi (A)	1	2	1	—	2	2	—	—	—	—	—	—	1	2	1	—	—	2	2
Northern Slopes SSD	35	39	32	43	33	49	5	2	2	3	6	3	40	41	34	46	36	55	55
Armidale (C)	—	16	13	20	1	6	—	11	5	—	5	—	—	27	18	20	1	11	11
Dumaresq (A)	2	1	1	5	2	—	—	—	—	—	—	—	2	1	1	5	2	—	—
Glen Innes (A)	1	2	3	3	1	2	—	—	—	3	—	—	3	2	3	3	4	2	2
Guyra (A)	—	2	2	—	1	—	—	—	—	—	—	—	—	2	2	—	—	—	—
Inverell (A) Pt B	1	2	2	3	1	2	—	—	—	2	—	—	1	2	2	5	1	2	2
Severn (A)	4	2	—	4	3	2	—	—	—	—	—	—	4	2	—	4	3	2	2
Tenterfield (A)	3	4	4	5	2	4	—	—	—	—	—	—	3	4	4	5	2	4	2
Uralla (A)	2	6	1	3	1	6	—	—	4	—	—	—	2	6	5	3	1	6	6
Walcha (A)	—	—	2	1	—	1	—	—	—	—	—	—	—	—	2	1	—	1	1
Northern Tablelands SSD	13	35	28	44	12	23	2	11	9	2	5	3	15	46	37	46	15	28	28
Morce Plains (A)	3	2	3	3	—	1	—	—	3	7	—	—	3	2	6	10	—	1	1
Narrabri (A)	7	6	3	5	3	1	—	—	—	—	—	—	7	6	3	5	3	1	1
North Central Plain SSD	10	8	6	8	3	2	—	—	3	7	—	—	10	8	9	15	3	2	2
<b>NORTHERN SD</b>	<b>58</b>	<b>82</b>	<b>66</b>	<b>95</b>	<b>48</b>	<b>74</b>	<b>7</b>	<b>13</b>	<b>14</b>	<b>12</b>	<b>6</b>	<b>11</b>	<b>65</b>	<b>95</b>	<b>80</b>	<b>107</b>	<b>54</b>	<b>85</b>	<b>85</b>

TABLE 6. DWELLING UNITS COMMENCED BY TYPE OF RESIDENTIAL BUILDING IN STATISTICAL LOCAL AREAS—continued  
(Number of dwelling units)

Statistical area	Houses												Other residential buildings												Total
	1994																								
	Feb.	Mar.	Apr.	May	Jun.	Jul.	Feb.	Mar.	Apr.	May	Jun.	Jul.	Feb.	Mar.	Apr.	May	Jun.	Jul.							
NORTH WESTERN STATISTICAL DIVISION																									
Coolah (A)	3	2	1	2	1	1	—	—	—	—	—	—	—	—	—	—	—	—	1	2	2	1	—		
Coonabarabran (A)	3	1	2	2	1	1	—	—	—	—	—	—	—	—	—	—	—	—	2	2	2	1	—		
Dubbo (C)	24	11	33	15	3	—	2	2	24	4	2	—	—	—	—	—	—	—	57	9	7	5	—		
Gulgandra (A)	1	6	5	7	2	2	6	—	—	—	—	2	—	—	—	—	—	—	6	7	7	2	4		
Mudgee (A)	6	10	7	10	11	9	3	5	—	—	—	—	—	—	—	—	—	—	7	10	7	11	19		
Narromine (A)	1	4	2	3	1	2	—	—	—	—	—	—	—	—	—	—	—	—	4	3	2	1	2		
Wellington (A)	1	5	—	—	1	1	—	—	—	—	—	—	—	—	—	—	—	—	1	5	—	1	1		
Central Macquarie SSD	39	39	50	39	20	15	13	7	24	4	2	2	—	—	—	—	—	—	74	46	43	22	17		
Bogan (A)	2	—	—	—	—	—	—	—	—	—	—	—	—	—	—	—	—	—	—	—	—	—	—		
Coonamble (A)	1	3	—	1	2	—	—	—	—	—	—	—	—	—	—	—	—	—	—	—	1	2	—		
Walgett (A)	3	4	2	3	—	1	—	—	—	—	—	—	—	—	—	—	—	—	—	—	3	—	—		
Warren (A)	2	1	—	1	—	1	—	—	—	—	—	—	—	—	—	—	—	—	—	—	1	—	—		
Macquarie-Barwon SSD	8	8	2	5	2	2	—	—	—	—	—	—	—	—	—	—	—	—	—	8	5	2	2		
Bourke (A)	—	—	1	1	—	—	—	—	—	—	—	—	—	—	—	—	—	—	—	—	1	—	—		
Brewarrina (A)	—	—	—	—	—	—	—	—	—	—	—	—	—	—	—	—	—	—	—	—	—	—	—		
Cobar (A)	—	1	1	4	1	2	—	—	—	—	—	—	—	—	—	—	—	—	—	—	1	4	2		
Upper Darling SSD	—	1	2	5	1	2	—	—	—	—	—	—	—	—	—	—	—	—	—	1	5	1	2		
<b>NORTH WESTERN SD</b>	<b>47</b>	<b>48</b>	<b>54</b>	<b>49</b>	<b>23</b>	<b>19</b>	<b>13</b>	<b>7</b>	<b>24</b>	<b>4</b>	<b>2</b>	<b>2</b>	<b>2</b>	<b>60</b>	<b>55</b>	<b>78</b>	<b>53</b>	<b>25</b>	<b>21</b>	<b>25</b>	<b>53</b>	<b>25</b>	<b>21</b>		

TABLE 6. DWELLING UNITS COMMENCED BY TYPE OF RESIDENTIAL BUILDING IN STATISTICAL LOCAL AREAS—continued  
(Number of dwelling units)

Statistical area	Houses												Other residential buildings												Total
	1994												1994												
	Feb.	Mar.	Apr.	May	Jun.	Jul.	Feb.	Mar.	Apr.	May	Jun.	Jul.	Feb.	Mar.	Apr.	May	Jun.	Jul.							
CENTRAL WEST STATISTICAL DIVISION																									
Bathurst (C)	17	27	13	16	22	16	8	8	—	65	11	—	25	35	13	81	33	16							
Blayney (A) Pt A	2	5	2	2	—	—	—	—	2	—	—	—	2	5	4	2	—	—							
Cabonne (A) Pt A	—	—	—	4	1	—	—	—	—	—	—	—	—	—	—	4	1	—							
Evans (A) Pt A	1	—	—	—	—	—	—	—	—	—	—	—	1	—	—	—	—	—							
Orange (C)	2	92	12	5	—	—	—	35	—	—	—	—	2	127	12	5	—	—							
Bathurst-Orange SSD	22	124	27	27	23	16	8	43	2	65	11	—	30	167	29	92	34	16							
Blayney (A) Pt B	2	—	2	1	1	—	—	—	—	—	—	4	2	—	2	1	1	4							
Cabonne (A) Pt B	—	—	—	—	—	—	—	—	—	—	—	—	—	—	—	—	—	—							
Evans (A) Pt B	2	5	2	3	6	3	—	—	—	—	—	—	2	5	2	3	6	3							
Greater Lithgow (C)	7	11	8	10	3	13	—	5	4	—	—	2	7	16	12	10	3	15							
Oberon (A)	12	4	5	1	3	4	—	—	—	—	—	—	12	4	5	1	3	4							
Rylstone (A)	1	1	1	1	—	—	—	—	—	—	—	—	1	1	1	1	—	—							
Central Tablelands (excl. Bathurst-Orange) SSD	24	21	18	16	13	20	—	5	4	—	—	6	24	26	22	16	13	26							
Bland (A)	—	2	1	—	—	2	—	—	—	—	—	—	—	2	1	—	—	2							
Cabonne (A) Pt C	—	—	5	5	5	3	2	8	2	—	—	—	—	—	—	8	—	—							
Cowra (A)	10	15	5	5	2	3	—	—	—	—	—	—	12	23	7	5	5	3							
Forbes (A)	7	6	5	3	2	3	—	—	—	—	7	—	7	6	5	3	9	3							
Lachlan (A)	—	3	—	3	1	3	—	—	—	—	—	—	—	3	—	3	1	3							
Parke (A)	—	—	—	7	7	13	10	—	—	—	—	—	10	—	—	7	7	13							
Weddin (A)	—	2	—	2	—	1	—	—	—	—	—	—	—	2	—	2	—	1							
Lachlan SSD	17	28	11	28	15	25	12	8	2	—	7	—	29	36	13	28	22	25							
<b>CENTRAL WEST SD</b>	<b>63</b>	<b>173</b>	<b>56</b>	<b>71</b>	<b>51</b>	<b>61</b>	<b>20</b>	<b>56</b>	<b>8</b>	<b>65</b>	<b>18</b>	<b>6</b>	<b>83</b>	<b>229</b>	<b>64</b>	<b>136</b>	<b>69</b>	<b>67</b>							

TABLE 6. DWELLING UNITS COMMENCED BY TYPE OF RESIDENTIAL BUILDING IN STATISTICAL LOCAL AREAS—continued  
(Number of dwelling units)

Statistical area	Houses												Other residential buildings												Total
	1994												1994												
	Feb.	Mar.	Apr.	May	Jun.	Jul.	Feb.	Mar.	Apr.	May	Jun.	Jul.	Feb.	Mar.	Apr.	May	Jun.	Jul.							
SOUTH EASTERN STATISTICAL DIVISION																									
Queanbeyan (C)	5	28	14	29	43	51	2	9	9	9	9	14	7	37	23	77	73	65							
Queanbeyan SSD	5	28	14	29	43	51	2	9	9	9	9	14	7	37	23	77	73	65							
Boorowa (A)	—	1	1	1	—	2	—	—	—	—	—	—	—	1	1	1	—	2							
Crookwell (A)	—	2	3	1	6	2	—	—	—	—	—	—	—	2	3	1	—	6							
Goulburn (C)	6	4	3	6	6	7	—	—	6	4	—	—	6	4	9	10	6	7							
Gunning (A)	2	4	2	—	—	1	—	—	—	—	—	—	2	4	2	—	—	1							
Harden (A)	1	2	—	5	3	2	—	—	—	—	—	—	1	2	—	5	3	2							
Mitwarae (A)	4	8	6	11	7	8	—	—	—	—	—	—	4	8	6	11	7	8							
Tallaganda (A)	3	2	1	—	—	2	—	—	—	—	—	—	3	2	1	—	—	2							
Yarrowlumla (A)	10	12	5	14	10	7	—	—	—	2	—	—	10	12	5	16	10	7							
Yass (A)	—	—	—	33	23	31	—	—	—	—	—	—	—	—	—	33	40	31							
Young (A)	3	3	5	11	2	5	—	5	—	—	—	3	3	8	5	11	2	8							
Southern Tablelands (excl. Queanbeyan) SSD	29	38	26	82	57	67	—	5	6	6	6	3	29	43	32	88	74	70							
Bega Valley (A)	29	38	17	29	16	27	3	—	6	2	—	17	32	38	23	31	19	44							
Eurobodalla (A)	25	19	44	31	31	34	—	—	15	—	—	6	25	19	59	31	35	40							
Lower South Coast SSD	54	57	61	60	47	61	3	—	21	2	—	23	57	57	82	62	54	84							
Bombala (A)	—	2	1	1	—	—	—	—	—	—	—	—	—	—	1	1	—	—							
Cooma-Monaro (A)	6	3	3	3	4	3	—	—	—	—	—	—	6	3	3	3	4	3							
Snowy River (A)	8	8	7	5	1	7	—	6	4	—	—	—	8	14	11	5	1	7							
Snowy SSD	14	13	11	9	5	10	—	6	4	—	—	—	14	19	15	9	5	10							
<b>SOUTH EASTERN SD</b>	<b>102</b>	<b>136</b>	<b>112</b>	<b>180</b>	<b>152</b>	<b>189</b>	<b>5</b>	<b>20</b>	<b>40</b>	<b>56</b>	<b>54</b>	<b>40</b>	<b>107</b>	<b>156</b>	<b>152</b>	<b>236</b>	<b>206</b>	<b>229</b>							

TABLE 6. DWELLING UNITS COMMENCED BY TYPE OF RESIDENTIAL BUILDING IN STATISTICAL LOCAL AREAS—continued  
(Number of dwelling units)

Statistical area	Houses							Other residential buildings							Total					
	Feb.	Mar.	Apr.	May	Jun.	Jul.	Aug.	Feb.	Mar.	Apr.	May	Jun.	Jul.	Aug.	Feb.	Mar.	Apr.	May	Jun.	Jul.
	1994																			
MURRUMBIDGEE STATISTICAL DIVISION																				
Coolamon (A)	2	5	—	2	—	3	—	—	—	—	—	—	—	—	2	5	—	2	—	3
Cootamundra (A)	2	3	1	3	—	4	—	—	—	—	—	—	—	—	9	3	1	3	—	4
Gundagai (A)	1	1	—	4	—	5	—	—	—	—	—	—	—	—	1	1	—	4	—	5
Juneee (A)	—	6	1	1	2	—	—	—	—	—	—	—	—	—	—	6	1	1	2	—
Lockhart (A)	1	—	1	2	3	2	—	—	—	—	—	—	—	1	—	—	1	2	3	1
Narrandera (A)	—	2	—	7	2	5	—	—	—	—	—	—	—	—	—	2	—	7	4	5
Temora (A)	2	—	1	6	1	—	—	—	—	—	—	—	—	—	2	3	1	6	1	—
Tumut (A)	6	32	4	5	4	3	—	—	—	—	—	—	—	—	6	40	15	8	4	3
Wagga Wagga (C)	62	31	7	30	5	2	—	—	—	—	—	—	—	—	71	35	9	36	5	2
Central Murrumbidgee SSD	76	80	15	60	17	24	—	—	—	—	—	—	—	—	92	95	28	69	19	24
Carrathool (A)	—	—	—	1	—	—	—	—	—	—	—	—	—	—	—	—	—	1	—	—
Griffith (C)	4	4	6	14	4	6	—	—	—	—	—	—	—	—	16	4	14	21	16	6
Hay (A)	3	2	3	1	1	3	—	—	—	—	—	—	—	—	3	2	3	1	1	3
Leeton (A)	4	6	2	8	5	5	—	—	—	—	—	—	—	—	4	8	2	8	5	11
Murrumbidgee (A)	—	—	—	2	—	4	—	—	—	—	—	—	—	—	—	—	—	2	—	4
Lower Murrumbidgee SSD	11	12	11	26	10	18	—	—	—	—	—	—	—	—	—	14	19	33	22	24
<b>MURRUMBIDGEE SD</b>	<b>87</b>	<b>92</b>	<b>26</b>	<b>86</b>	<b>27</b>	<b>42</b>	<b>28</b>	<b>17</b>	<b>21</b>	<b>16</b>	<b>14</b>	<b>6</b>	<b>6</b>	<b>115</b>	<b>109</b>	<b>47</b>	<b>102</b>	<b>41</b>	<b>48</b>	



TABLE 6. DWELLING UNITS COMMENCED BY TYPE OF RESIDENTIAL BUILDING IN STATISTICAL LOCAL AREAS—continued

Statistical area	Houses												Other residential buildings												Total
	1994																								
	Feb.	Mar.	Apr.	May	Jun.	Jul.	Feb.	Mar.	Apr.	May	Jun.	Jul.	Feb.	Mar.	Apr.	May	Jun.	Jul.							
	MURRAY STATISTICAL DIVISION																								
Albury (C)	26	63	34	16	4	23	15	6	3	2	—	—	—	—	—	41	69	37	18	4	23				
Hume (A)	3	9	3	4	5	5	—	3	—	2	—	—	—	—	—	3	12	3	6	5	5				
Albury SSD	29	72	37	20	9	28	15	9	3	4	—	—	—	—	—	44	81	40	24	9	28				
Corowa (A)	10	2	8	6	5	5	2	—	—	4	3	—	—	—	—	12	2	8	10	8	15				
Culcairn (A)	—	1	—	—	1	—	—	—	—	—	—	—	—	—	—	—	—	—	—	—	—				
Holbrook (A)	—	—	1	—	—	1	—	—	—	—	—	—	—	—	—	—	—	—	—	—	—				
Tumbarumba (A)	1	4	—	4	1	—	—	—	—	—	—	—	—	—	—	1	4	—	4	1	—				
Urana (A)	1	—	—	4	—	—	—	—	—	—	—	—	—	—	—	1	—	—	4	—	—				
Upper Murray (excl. Albury) SSD	12	7	9	14	7	6	2	—	—	4	3	—	—	—	—	14	7	9	18	10	6				
Berrigan (A)	5	8	4	2	6	1	—	—	—	—	—	—	—	—	—	5	8	4	2	6	5				
Conargo (A)	—	—	—	—	—	—	—	—	—	—	—	—	—	—	—	—	—	—	—	—	—				
Deniliquin (A)	3	1	1	4	4	3	—	—	—	—	—	—	—	—	—	3	1	1	4	4	3				
Jenilderie (A)	—	—	—	—	1	—	—	—	—	—	—	—	—	—	—	—	—	—	—	—	—				
Murray (A)	1	6	5	9	—	4	—	—	—	—	—	—	—	—	—	1	6	5	9	1	4				
Wakool (A)	—	—	5	—	1	1	—	—	—	—	—	—	—	—	—	—	—	—	—	—	—				
Windouran (A)	—	—	—	—	—	—	—	—	—	—	—	—	—	—	—	—	—	—	—	—	—				
Central Murray SSD	9	15	15	15	12	9	—	—	—	—	—	—	—	—	—	9	15	15	15	12	13				
Balranald (A)	1	—	—	—	—	—	—	—	—	—	—	—	—	—	—	—	—	—	—	—	—				
Wentworth (A)	2	—	—	4	—	—	—	—	—	—	—	—	—	—	—	2	—	—	4	—	5				
Murray-Darling SSD	3	—	—	4	—	—	—	—	—	—	—	—	—	—	—	3	—	—	4	—	5				
<b>MURRAY SD</b>	<b>53</b>	<b>94</b>	<b>61</b>	<b>53</b>	<b>28</b>	<b>43</b>	<b>17</b>	<b>9</b>	<b>3</b>	<b>8</b>	<b>3</b>	<b>9</b>	<b>70</b>	<b>103</b>	<b>64</b>	<b>61</b>	<b>31</b>	<b>61</b>	<b>31</b>	<b>52</b>					
	FAR WEST STATISTICAL DIVISION																								
Broken Hill (C)	—	1	1	—	1	—	—	—	—	—	—	—	—	—	—	—	—	—	—	—	—				
Central Darling (A)	—	—	—	2	1	1	—	—	—	—	—	—	—	—	—	—	—	—	2	1	—				
Unincorp. Far West	—	—	—	—	—	—	—	—	—	—	—	—	—	—	—	—	—	—	—	—	—				
<b>FAR WEST SD</b>	<b>—</b>	<b>1</b>	<b>1</b>	<b>2</b>	<b>2</b>	<b>1</b>	<b>—</b>	<b>—</b>	<b>—</b>	<b>—</b>	<b>—</b>	<b>—</b>	<b>—</b>	<b>—</b>	<b>—</b>	<b>—</b>	<b>—</b>	<b>2</b>	<b>2</b>	<b>1</b>					
	NEW SOUTH WALES																								
<b>NEW SOUTH WALES</b>	<b>2,247</b>	<b>2,772</b>	<b>2,219</b>	<b>3,216</b>	<b>2,035</b>	<b>2,442</b>	<b>1,246</b>	<b>1,717</b>	<b>1,273</b>	<b>2,206</b>	<b>1,246</b>	<b>1,258</b>	<b>3,493</b>	<b>4,489</b>	<b>3,492</b>	<b>5,422</b>	<b>3,281</b>	<b>3,700</b>							

## EXPLANATORY NOTES

### Introduction

This publication contains monthly details of the number of new dwelling units reported by approving authorities as having commenced.

2. As from November 1990 the data have been compiled using an 'as reported' method. Previously, data were revised for up to five months as councils notified the ABS of commencements occurring before the reference month. A comparison of data compiled using the two methods showed that, while the actual numbers may vary (both on the high and the low side), the trends were very similar. It is not possible for all the previous data to be compiled under the new method, nor can future data be compiled under the old method. Therefore there is a break in series. The advantages of the new method are that there are generally no revised data and that NSW data are more comparable with similar series issued by other States. However, if there are significant reporting delays, previous monthly data will be revised.

### Scope and coverage

3. The statistics were compiled from the monthly reports, provided by local and other government authorities, of commencements of new houses and new other residential buildings for which:

- (a) building permits were issued by local government authorities in areas subject to building control by those authorities;
- (b) contracts were let or day labour work was authorised by Commonwealth, State, semi-government or local government authorities; and
- (c) are valued at \$10,000 or more.

4. The number of dwelling units created by alterations and additions to existing buildings, and through the construction of new 'non-residential buildings' (i.e. buildings other than residential buildings) is not included.

### Definitions

5. A dwelling unit is defined as a self-contained suite of rooms, including cooking and bathing facilities and intended for long-term residential use. Units (whether self-contained or not) within buildings offering institutional care (such as hospitals) or temporary accommodation (such as motels, hostels and holiday apartments) are not defined as dwelling units.

6. A residential building is defined as a building predominantly consisting of one or more dwelling units. Dwellings can be either houses or other residential buildings as follows:

- (a) a house is defined as a detached building predominantly used for long-term residential purposes and consisting of only one dwelling unit. Thus detached 'granny flats' and detached dwelling units

(such as caretakers' residences) associated with other buildings are defined as houses for the purpose of these statistics;

- (b) an *other residential building* is defined as a building which is predominantly used for long-term residential purposes and which contains (or has attached to it) more than one dwelling unit (e.g. a block of townhouses, a duplex, or an apartment building).

7. Commencement. For the purpose of this statistical series, a job is regarded as being commenced on the date when it is reported that:

- (a) the job is first inspected by a local government or other government authority building inspector or surveyor, whether the work is passed or not. In general, the first inspection is undertaken at the foundations or footings stage of construction; or
- (b) the job is determined as commenced by a building inspector or surveyor.

8. Ownership. The ownership of a residential building is classified at the time of approval as either 'private sector' or 'public sector' according to the expected ownership of the completed building.

9. Values data are derived by aggregation of the estimated completed value of building work as reported on approval documents. These estimates exclude value of land and landscaping but include site preparation. For houses, these estimates are usually a reliable indicator of the completed value of the building. However, for other residential buildings and non-residential buildings these estimates can and often do differ significantly from the completed value of the building.

10. From July 1992, an expanded functional classification of buildings based on the Dwelling Structure Classification (DSC) has been introduced by the ABS to provide more detailed information on residential building approvals.

11. The DSC has been developed by the ABS to provide a standard classification of the different types of dwelling structures (houses, flats, townhouses, etc.). The DSC will be implemented across all major collections of housing data in the ABS. The DSC has the same overall scope as the classification used in previous collections but provides more detail than previously available to reflect the current interest in medium to high density housing.

12. In particular, for Building Approvals and Dwelling Commencements, DSC allows new other residential building to be classified as follows:

- (a) Semi-detached, row or terrace houses, townhouses, etc. (dwellings having their own private grounds and no other dwellings above or below) with:
  - (i) one storey; or

- (ii) two or more storeys.
- (b) Flats, units or apartments, etc. (dwellings not having their own private grounds and usually sharing a common entrance, foyer or stairwell) in a building of:
  - (i) one or two storeys;
  - (ii) three storeys; or
  - (iii) four or more storeys.

13. More details on the DSC are contained in the ABS Information Paper, *Dwelling Structure Classification (DSC)* (1296.0).

### Statistical areas of New South Wales

14. This bulletin contains data presented according to the Australian Standard Geographical Classification (ASGC) and incorporating changes brought about by the (State) Local Government Act 1993 to the titles of legal Local Government Areas (LGAs). Under this classification, statistical areas are defined as follows:

- (a) *Statistical Local Areas (SLAs)*. These geographical areas are in most cases either identical with, or have been aggregated to, the previously published whole or part of legal Local Government Areas (LGAs) as defined under the (State) *Local Government Act 1919* and comprising cities (C), municipalities (M) and shires (S). In other cases, they are identical to each previously published unincorporated area. The (State) *Local Government Act 1993* eliminated the titles of Shire and Municipality and instituted the concept of Area (A). With one exception—Sutherland (S) became Sutherland Shire (A)—names of the LGAs have remained unaltered. In aggregate, SLAs cover the whole of the State without gaps or overlaps. In some cases legal LGAs overlap Statistical Subdivision boundaries and therefore comprise two SLAs (Part A and Part B) or three SLAs in the case of Cabonne (S) (Part A, Part B and Part C).
- (b) *Statistical Subdivisions (SSDs)*. These consist of one or more SLAs and form the intermediate size spatial unit for the presentation of regional data.
- (c) *Statistical Divisions (SDs)*. These consist of one or more Statistical Subdivisions (SSDs). Where SSDs are not shown for statistical purposes, statistical local areas are shown ordered alphabetically within statistical divisions. The divisions are designed to be relatively homogeneous regions characterised by identifiable social and economic units within the region, under the unifying influence of one or more major towns or cities.
- (d) *Statistical Districts*. To provide comparable statistics over a period of time, statistical districts have been defined around selected urban centres, with a population of 25,000 or more, experiencing urban growth beyond the legal local government area

boundaries. Those districts are intended to contain the anticipated urban spread over the next 20 years. In some cases, Statistical District boundaries are identical to those of particular Statistical Subdivisions (e.g. Newcastle SSD and Wollongong SSD included in Table 5 of this publication).

15. Further information concerning statistical areas is contained in the publication *Regional Statistics, New South Wales*, 1989 issue (1304.1) and in the publication *Australian Standard Geographical Classification* (1216.0).

### General

16. For purposes of comparison over time, it should be noted that statistics of dwelling commencements are affected from month to month by large projects (such as blocks of flats) commenced in particular months, and also by the administrative arrangements of government authorities.

### Comparability of statistics

17. Because of the difference in data sources, collection methodologies and timing of notification of commencements, care should be exercised in comparing quarterly data derived from monthly dwelling unit commencements statistics with the quarterly dwelling unit commencements statistics from the Building Activity Survey—published in *Building Activity, New South Wales* (8752.1).

18. Users may also wish to refer to the following building and construction publications which are available on request.

#### NEW SOUTH WALES

*Building Approvals, New South Wales* (monthly) (8731.1)

*Building Activity, New South Wales* (quarterly) (8752.1)

#### AUSTRALIA

*Housing Finance for Owner Occupation, Australia* (monthly) (5609.0)

*Price Index of Materials Used in House Building, Six State Capital Cities and Canberra* (monthly) (6408.0)

*Building Approvals, Australia* (monthly) (8731.0)

*Building Activity, Australia* (quarterly) (8752.0)

*Engineering Construction Survey, Australia* (quarterly) (8762.0)

### Symbols and other usages

A	Area
C	City
r	figure or series revised since previous issue
SD	Statistical Division
SLA	Statistical Local Area
SSD	Statistical Subdivision
..	not applicable
—	nil or rounded to zero (including null cells)

19. Where figures have been rounded, discrepancies may occur between sums of the component items and totals.



## For more information ...

The ABS publishes a wide range of statistics and other information on Australia's economic and social conditions. Details of what is available in various publications and other products can be found in the *ABS Catalogue of Publications and Products* available at all ABS Offices (see below for contact details).

### Information Consultancy Service

Information tailored to special needs of clients can be obtained from the Information Consultancy Service available at ABS Offices (see Information Inquiries below for contact details).

### National Dial-a-Statistic Line

0055 86 400

This number gives you 24 hour access, 365 days a year for a range of statistics.

### Electronic Data Services

A large range of data is available via on-line services, diskette, magnetic tape, tape cartridge and CD ROM. For more details about our electronic data services, contact any ABS Office (see Information Inquiries below for contact details).

### Bookshops and Subscriptions

There are over 500 titles of various publications available from ABS bookshops in all ABS Offices (see below Bookshop Sales for contact details). The ABS also provides a subscription service through which nominated publications are provided by mail on a regular basis at no additional cost (telephone Publications Subscription Service toll free on 008 02 0608 Australia wide).

## Sales and Inquiries

Regional Offices	Information Inquiries	Bookshop Sales
SYDNEY	(02) 268 4611	(02) 268 4620
MELBOURNE	(03) 615 7000	(03) 615 7829
BRISBANE	(07) 222 6351	(07) 222 6350
PERTH	(09) 360 5140	(09) 360 5307
ADELAIDE	(08) 237 7100	(08) 237 7582
HOBART	(002) 205 800	(002) 205 800
CANBERRA	(06) 207 0326	(06) 207 0326
DARWIN	(089) 432 111	(089) 432 111
<b>National Office</b>		
ACT	(06) 252 6007	008 020 608



Information Services, ABS, GPO Box 796, Sydney NSW 2001  
or any ABS office

